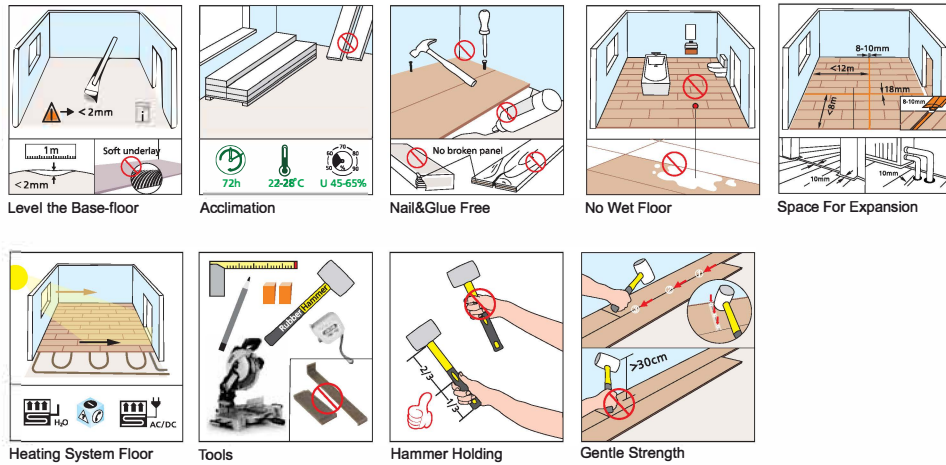


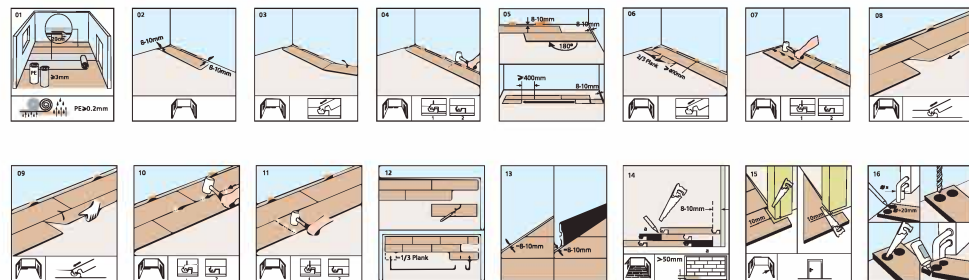
Tap&Go Locking System

Preparation

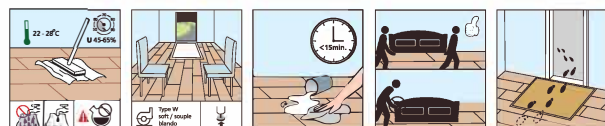


Installation

NOTE: Please examine all the flooring before installing for the colour, finish, quality and style. The manufacturer will not assume any responsibility for the above once the product has been installed.



Care and Maintenance



Detailed Care Maintenance Tips:

- **DO:**
 - Wipe up liquid or food spills promptly with dry cloth or paper towels.
 - Remove sticky residue (like jelly) with a slightly dampened cloth.
 - For general cleaning please use Bona timber spray mop.
 - Daily Cleaning: Remove loose dirt and grit, dust mop, broom sweep, electric broom or vacuum.
 - Use interior and exterior doormats at entrances to collect dirt and moisture and prevent it from being tracked onto the floor.
 - Area rugs are recommended in front of kitchen sinks, at all pivot points and within high-traffic areas. The rugs must be made of a breathable material to prevent moisture entrapment.
 - Place runners and area rugs (with slip-resistant backings) along high-traffic areas.
 - Keep animal nails trimmed to prevent finish scratches.
 - To prevent surface damage avoid rolling heavy appliances and furniture on the floor. Use plywood hardboard or appliance lifts, if necessary.
 - Use furniture leg protector pads under all furniture legs.
 - Replace hard, narrow furniture rollers with wide rubber rollers.
 - Keep the relative humidity in your home between 45% and 65%.
 - Protect your floor from direct sunlight.
 - Please make sure that the temperature and humidity are moderate in the room.

- **DON'T:**
 - Use any of the following products (or products similar in nature) on your floor: ammonia based cleaners, acrylic finishes, wax based products, detergents, bleach, polishes and oil soaps, abrasive cleaning soaps or acidic materials such as vinegar.
 - **DO NOT WET MOP**
 - Allow water to stand on your floor for any length of time – wipe up immediately.
 - Walk across your floor in poorly maintained shoes with heel taps, spike heels or with any sharp object protruding from your shoe
 - Allow furniture to rest on the floor on small metal tips or hard domes
 - Use rubber, foam back or plastic mats as they may trap moisture and possibly discolor your floor
 - Use vacuums with beater bars or hard heads
 - Allow "spike heel" type shoes to indent wood floors, especially if the heel tip is damaged or has lost its rubber pad
 - Leave your flooring exposed to direct sunlight for long periods of time